

Disturbance Factors



Fires



Timber extraction



Hunting



Livestock browsing



Introduced pastures

Sustainable Productive Projects



Beekeeping



Regenerative livestock farming



Unama palm

Complementarity

In terms of national prioritization and policies, the BHM contributes to achieving the objectives outlined in the following instruments:

- National Plan for Ecological Restoration, Rehabilitation, and Recovery of Degraded Areas (PNR).
- National Biodiversity Policy.
- National Climate Change Policy.

Strategies and actions

Within the BHM, preservation, restoration, and sustainable use activities are implemented, with 185 hectares designated for restoration and 1,153 hectares for preservation. Actions are undertaken to ensure the success of these strategies, including:

- Ensure the propagation of native plant material through a nursery.
- Establish and maintain native seedlings.
- Construct fences to prevent deterioration caused by nearby livestock.
- Provide informational signs for awareness purposes.
- Install water tanks in pastures to prevent livestock from entering conservation areas.
- Create fire barriers to reduce the risk of wildfires.
- Conduct surveillance and monitoring tours by forest rangers.
- Establish trails to prevent trampling in restoration and preservation areas.



Follow us on our social networks:



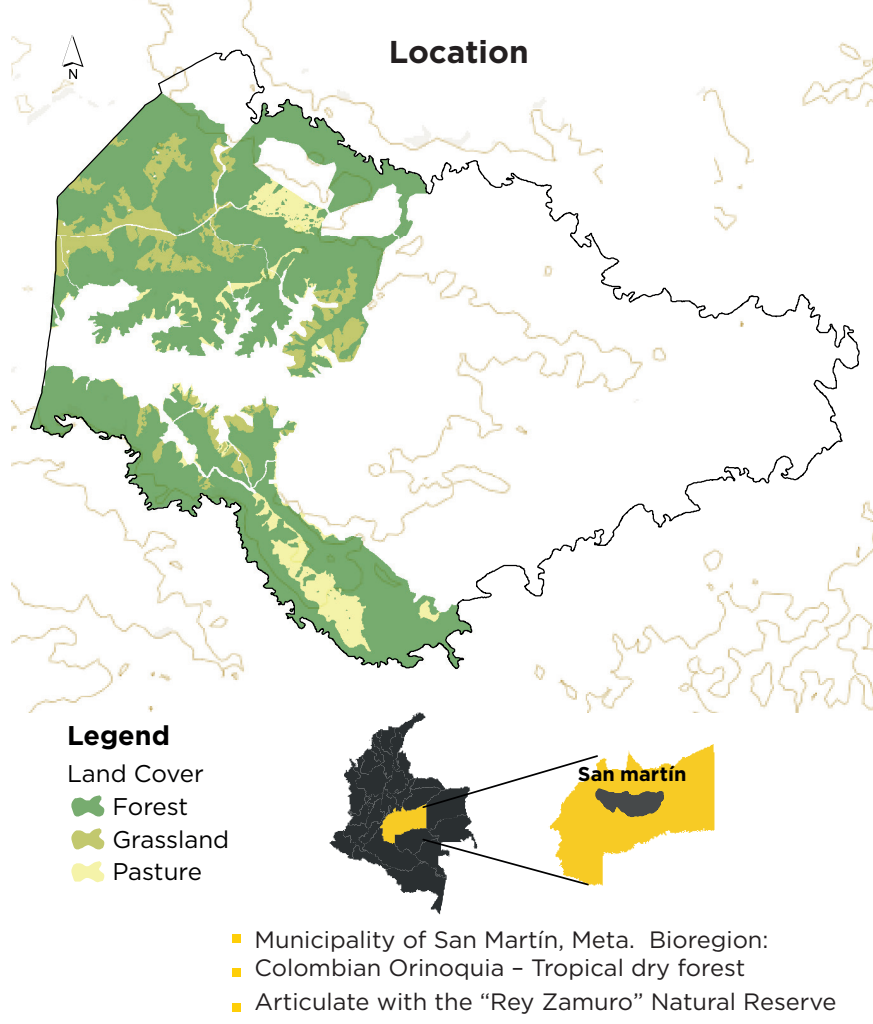
Meta Habitat Bank



¿What is a Habitat Bank?

Habitat Banks are mechanisms that integrate compensation and investment requirements from various impact generators, as well as contributions from the voluntary market, to establish environmental conservation areas with greater coverage and impact. They are regulated and defined by Resolution 1051 of 2017 from the Ministry of Environment and Sustainable Development (MADS). The linking of these areas involves a process of technical, legal, and financial analysis, during which strategies for ecosystem preservation and restoration are implemented.

Habitat Banks operate under a payment mechanism for environmental results, meaning that payment is made only when milestones related to biodiversity gains are achieved.



History

BHM is the first Habitat Bank in Latin America. It was created out of the interest of landowners and Terrasos to develop an innovative project that generates a positive impact and profits through conservation efforts. The Habitat Bank encompasses important biomes, such as the Piedemonte Llanero Helobiome, the Altiplanicie, and the Piedemonte Amazónico, which include gallery forests and savannas. These biomes form a unique area in the country that is home to a rich diversity of life. However, they also face threats from activities such as cattle ranching, agriculture, and mining production, particularly crude oil and gas extraction.

The most important land covers in the BHM are moriche swamps, savannas, and riparian forests, which serve as ecological corridors and provide essential habitats for fauna. The BHM contains approximately 28 small streams that flow into the Meta River watershed, making it highly significant for the region's hydrology.

Moriche Palm *Mauritia flexuosa*

It forms associations near bodies of water known as moriche swamps, which are home to a rich diversity of fauna.

Jaguar *Panthera onca*

Threats

IUCN NT

Threatened category

VU Vulnerable

NT Almost threatened

Zocay Monkey *Plecturocebus ornatus*

Threats

IUCN VU

Endemic to the humid tropical forests of western Meta department in Colombia, howler monkeys are known for intertwining their tails, particularly in pairs.

Anaconda *Eunectes murinus*

The anaconda prefers to hunt in still waters, where it submerges to catch animals as they drink, swallowing them whole.

Tapir *Tapirus terrestris*

Threats

IUCN VU

The tapir is the largest terrestrial animal in South America. Calves are born with white stripes, which help camouflage them from predators during the first few months of life

This is the third largest feline on the planet, with unique color patterns on its body that can be compared to human fingerprints.